



Riley Building, Derwent Street, Salford

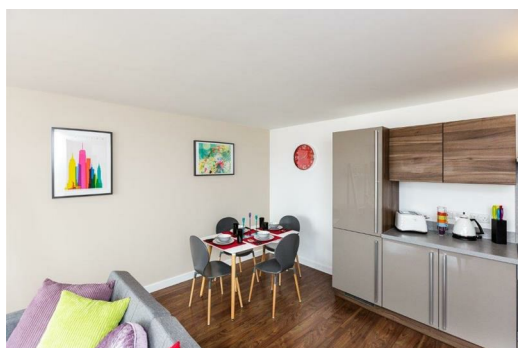
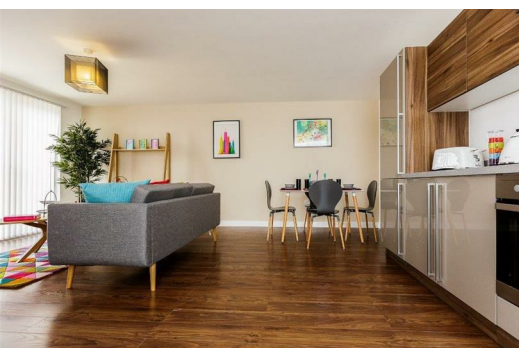
£1,100 PCM

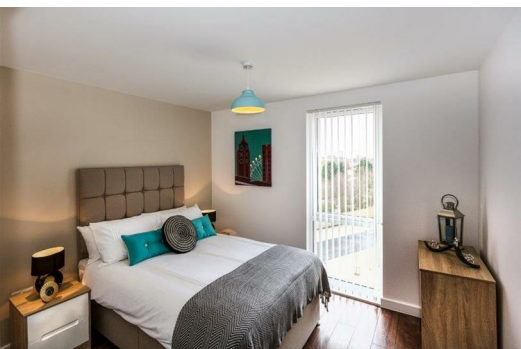
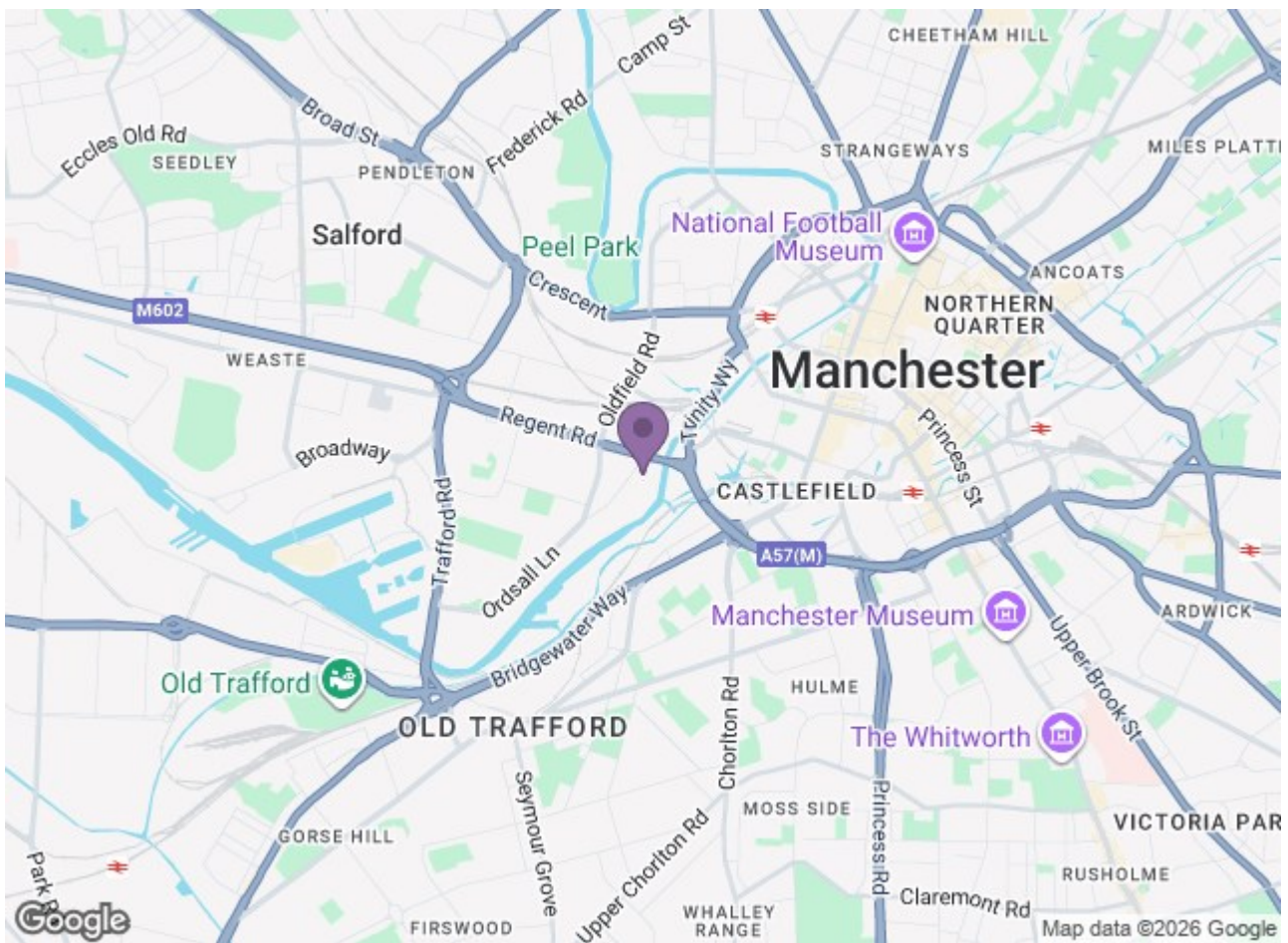
If you're looking for a sweet treat of a home, this well-presented two-bedroom furnished apartment is like finding the perfect dessert at the end of a great meal, satisfying, stylish, and exactly what you've been craving. Located in a highly convenient spot with excellent transport links, this property is ideal for professionals seeking comfortable city living with plenty of flavour.

Step inside and you'll be greeted by two well-proportioned bedrooms, a large open-plan living and dining area that's as inviting as your favourite coffee shop, and a modern fitted kitchen with integrated appliances that makes cooking feel like a chef's delight. With a bright and practical layout, this place is perfect for everyday life, and just as good for hosting friends in for drinks and dinner. The apartment comes fully furnished, so you can move in and start enjoying it straight away, no unpacking required!

The location is the cherry on top. You're just a short stroll from Regent Road Retail Park, where a wide range of shops, supermarkets, and eateries make everyday errands feel more like a casual bite out. With both Manchester city centre and Salford Quays close by, you've got endless options for dining, leisure and cultural experiences right on your doorstep.

For commuters, the connectivity is the icing on the cake. Combrook Metrolink Station is within walking distance, offering quick and direct access to Manchester city centre, MediaCityUK and beyond. Road links are just as good, with easy access to Regent Road and the M602, perfect for those who travel further afield.





Energy Efficiency Rating			Environmental Impact (CO ₂) Rating		
Band	Score	Rating	Band	Score	Rating
A	92-100	75	A	1-10	77
B	81-91		B	11-20	
C	69-80		C	21-30	
D	55-68		D	31-40	
E	44-54		E	41-50	
F	35-43	65	F	51-60	65
G	21-34		G	61-70	
H	1-20		H	71-80	
I	1-20	55	I	81-90	55